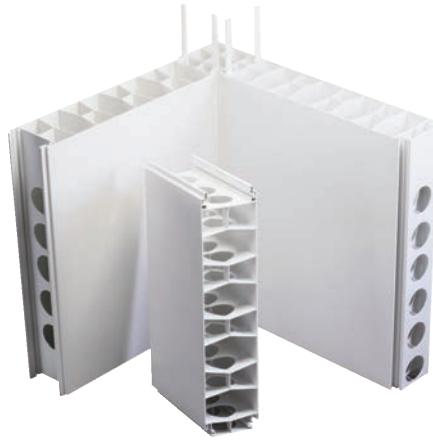


Extrutech FORM™ System

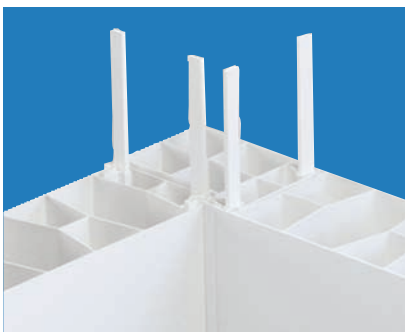
Innovative building product from Extrutech Plastics, Inc.

Extrutech's FORM™ System brings a bright new face to concrete form construction by combining standard concrete form methods with the easy-to-clean, sanitary surface that Extrutech panels have always provided. This versatile, builder-friendly system features a two-foot wide, six-inch thick, precut panel that snaps together and locks in place using a double-spline E-Locking System. Creating a structural wall system that is a time-saver for both the contractor and client, resulting in a bright white, sanitary, easy-to-clean finished wall.



*Extrutech FORM™ System
6" Thick Panel
Patent 8,677,713*

Extrutech FORM™ System is a stay-in-place concrete form that provides a superior sanitary surface, designed for durability. The FORM panel provides a non-porous, prefinished, structural panel that reduces finishing and installation time of your construction project, resulting in easy-to-clean, sanitary walls. Panels have a smooth, bright white, glossy surface on both sides that improves overall reflective lighting. Use of the FORM panel provides a great-looking, easy-to-clean wall for corrosive or high-moisture areas. These waterproof, concrete forms will never rust, rot, corrode or discolor, are easy to keep clean, and are ideal for high moisture areas where daily sanitation is critical to the owner.



Corner Detail with Spline Inerts

Extrutech FORM™ panels lock together using an E-locking double spline system. Simply insert two splines at each joint. Insures a strong solid joint between panels.



Extrutech FORM™ for Parlor Walls



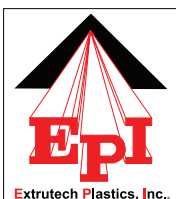
Exterior of Robotic Room Walls



Interior of Robotic Room Walls



Interior of Milk Room Walls



EXTRUTECH PLASTICS, INC.
5902 W Custer St • Manitowoc, WI 54220 • Local: 920-684-9650
Ph: 888-818-0118 FAX: 920-684-4344 Email: info@epiplastics.com
www.epiplastics.com



Extrutech FORM™ System

Extrutech FORM™ P624 Panel is a stay-in-place concrete form whose surface quickly sheds water; made with 100% virgin, exterior-grade PVC. Has a removable, clear protective film that keeps the panels clean during construction. The 6" thick by 24" wide panels can be joined together to form any wall length and are available in cut-to-the-inch lengths, up to 20 feet. Extrutech FORM™ System features double-spline, male/female interlocking joints and strong honeycomb interior walls designed to provide maximum panel stability.

Recommended Uses:

For any area that requires easy-to-clean concrete structural walls, such as:

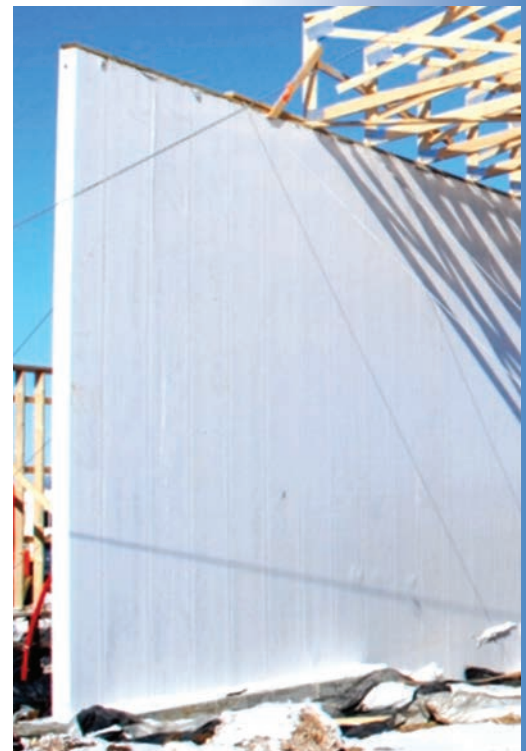
- Dairy Barns
- Cheese Plants
- Bottling Plants
- Milking Parlors
- Food Processing
- Cold Storage
- Car Washes
- Clean Rooms
- Laboratories

Advantages:

- Quick installation
- Never needs paint
- Fewer seams – 2 foot wide panels
- Custom cut panel kits to 20 feet
- Snap together double-spline, E-Locking System
- Standard rebar reinforcing methods apply
- Water and corrosion-proof
- Cleans easily - low maintenance
- Panels will not rust, rot, or flake
- Resists mold, mildew, bacteria growth
- Brightens the interior of any building
- Available in a bright white, high gloss, hard surface
- Low maintenance, easy-to-clean, with water/mild cleaner
- Protective film on both sides keeps panels clean during construction



Snap together, insert splines, brace, add rebar and pour.



Stay-in-place 17 foot high Extrutech FORM™ Wall pre-finished on both sides.



Typical bracing installation of Extrutech FORM™ Wall – a 17 ft x 50 ft area shown.



Easy set and quick penetration installation.

ISO 9001:2008 Certified for Quality

EXTRUTECH PLASTICS, INC.

5902 W Custer St • Manitowoc, WI 54220 • Local: 920-684-9650
Ph: 888-818-0118 FAX: 920-684-4344 Email: info@epiplastics.com

www.epiplastics.com

