

# Extrutech Suspended Ceiling Grid System

Corrosion-Proof Engineered Polymer Ceiling Panels and Grid System



**CP2400**  
24" Ceiling Panel

*Extrutech Engineered Polymer Suspended Ceiling Grid System with Extrutech Plastic Ceiling Panels*

Extrutech's high-quality Suspended Engineered Polymer Grid System is the ideal solution to create or maintain a clean environment while eliminating duct work, pipes, or wiring as a potential source of contamination. Our non-porous, smooth, glossy, bright white grid panels can be used to replace existing acoustic panels – they are reversible, easy-to-clean, and never need painting. Additionally, the installation of a drop ceiling in an existing high-ceilinged facility can drastically lower energy costs by reducing the area to be heated or cooled. We offer no-cost or obligation quotes, by stock parts or room size, and your order can be drop-shipped to your job location.

## Advantages

- Engineered Polymer Grid System
- Rigid, Solid Components
- Will not Sag or Deform
- Highly Reflective
- Quick and Easy Installation
- Water- and Corrosion-proof
- Resists Mold, Mildew, Bacterial Growth
- No Paint to Flake Off
- Washable
- Will Not Rust or Rot
- Easy to Clean
- 20 Year Panel Warranty
- Stays Bright White

## Features

- Panel sizes in 2' x 2', 2' x 4', 2' x 6', and 2' x 8' lengths
- Lightweight, durable 1" x 1-1/4" rigid runners
- 1-1/4" wide face
- Use with standard light fixtures
- Easy assembly, stock part sizes
- Rigid double-walled panels
- Bright white, hard surfaces
- High-grade, color-fast material
- Main runners in 12' lengths
- Snap-together installation
- Easy assembly with standard tools
- Available with panel hold-down clips
- Low profile, high-gloss surface
- Reversible ceiling panels
- Class A, ASTM-E84 for Smoke and Flame

## Facilities Served

- Food Processing
- Chemical Plants
- Dairies
- Fisheries
- Laboratories
- Restaurants
- Locker Rooms
- Beverage Plants
- Clean Rooms
- Poultry and Hog
- Kennels
- Hospitals
- Supermarkets
- Basements
- Restrooms
- Indoor Swimming Pools

Established 1992



## EXTRUTECH PLASTICS, INC.

*Extruder of High Quality Building Products*

5902 West Custer Street • Manitowoc, WI 54220 USA  
Phone 888-818-0118 Fax 920-684-4344 • info@epiplastics.com

[www.epiplastics.com](http://www.epiplastics.com)



# Extrutech Suspended Ceiling System

## Corrosion-Proof Engineered Polymer Ceiling Panels and Grid System

For use in Clean Rooms, Food Processing, Packaging, Bottling Plants, Car Washes, Agricultural Facilities, Cheese and Milk Plants – anywhere suspended ceiling systems are required.



### CP2400

24" Ceiling Panel

Product Profile:

Dimensions: 3/8" x 23 3/4" wide

Colors: White

Material: Engineered Polymer

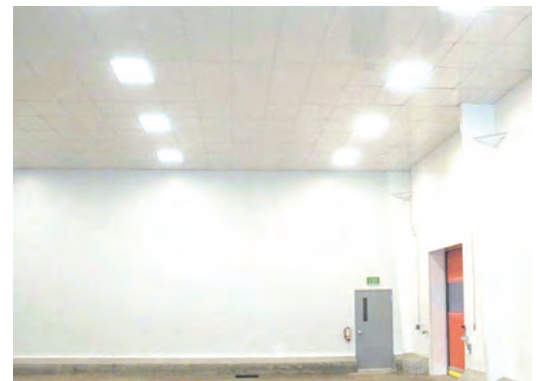
Lengths: 2' x 2', 2' x 4', 2' x 6', 2' x 8'

Weight: .75 lbs/sq ft

Extrutech CP2400-24" Ceiling Panel has a reversible, smooth, non-porous, white reflective surface and is available in 2', 4', 6', and 8' lengths. Panels have a Class "A" rating under the ASTM-E84 standard for flame and smoke. Panels are washable, easy to clean, 100% recyclable, and come with a 20 year panel warranty.



Extrutech's high-quality, Suspended Ceiling System provides a strong, durable interlocking grid for high-moisture areas. This is a clean, corrosion-proof system that is easy to install. The low profile, glossy white face has a non-painted surface that will not flake or chip. Available as 2' x 2', 2' x 4', 2' x 6', and 2' x 8' drop-in panels and designed to work with standard hanger hardware.



Established 1992



## EXTRUTECH PLASTICS, INC.

*Extruder of High Quality Building Products*

5902 West Custer Street • Manitowoc, WI 54220 USA

Phone 888-818-0118 Fax 920-684-4344 • info@epiplastics.com

[www.epiplastics.com](http://www.epiplastics.com)



Supplier of  
Buy American Act